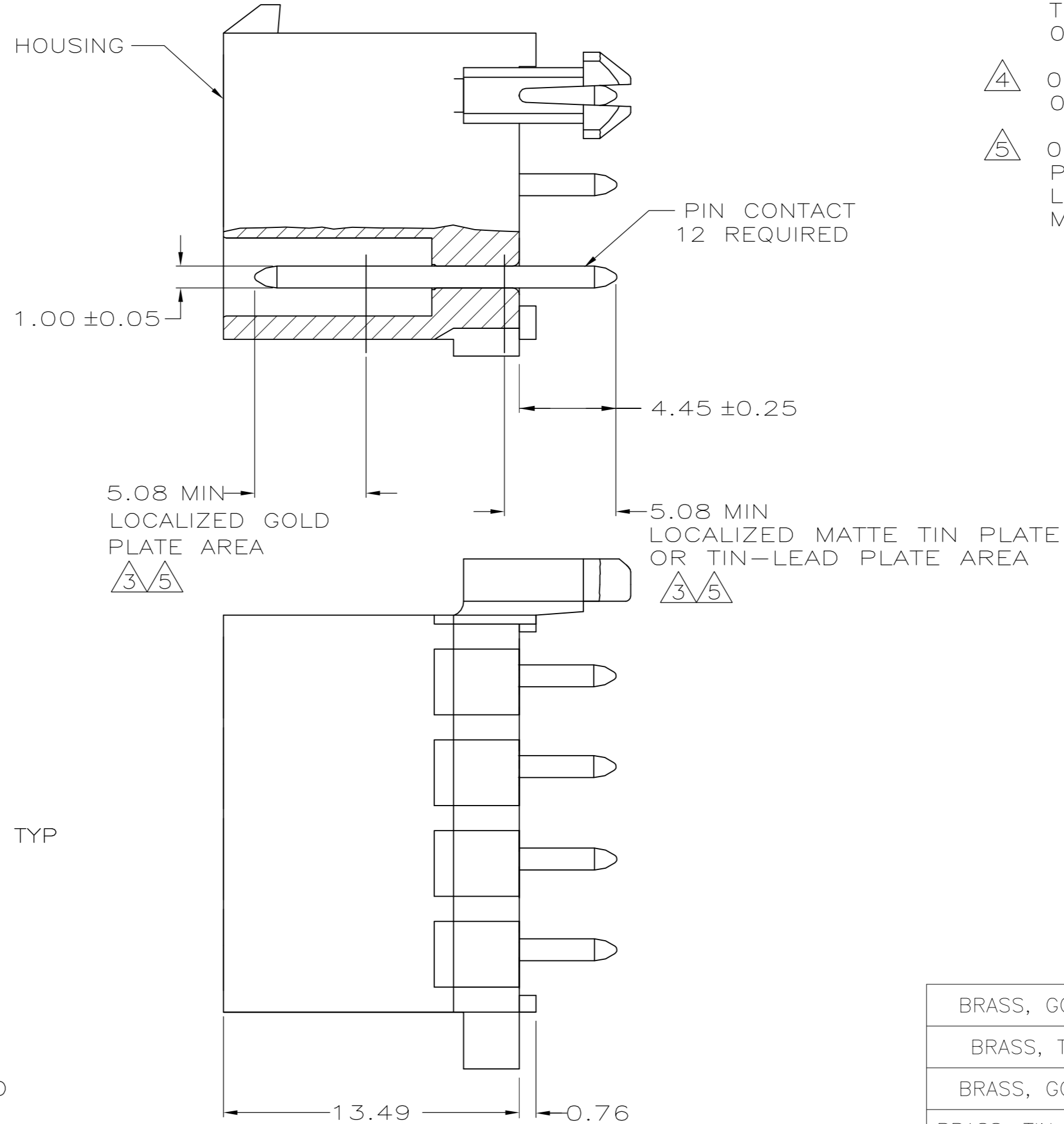
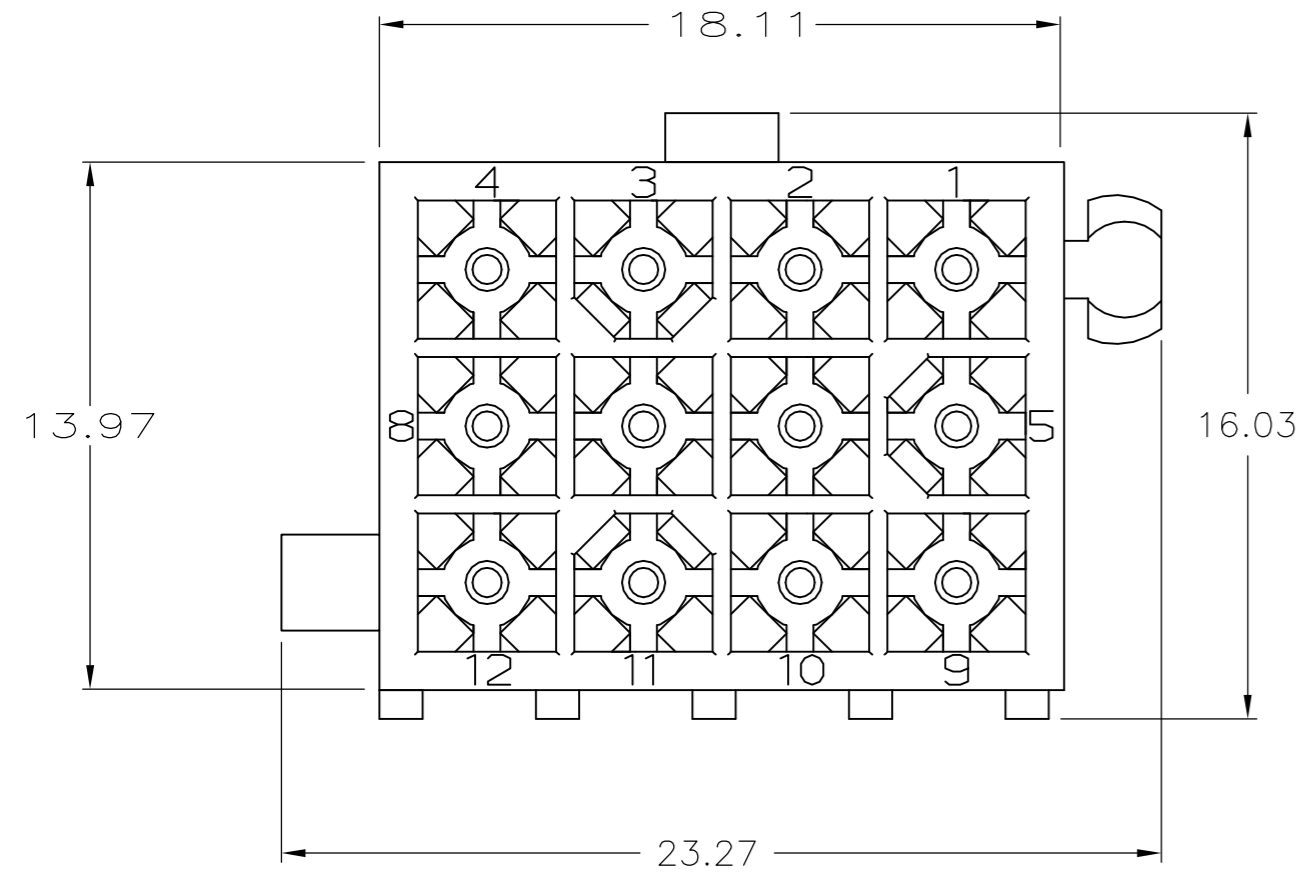
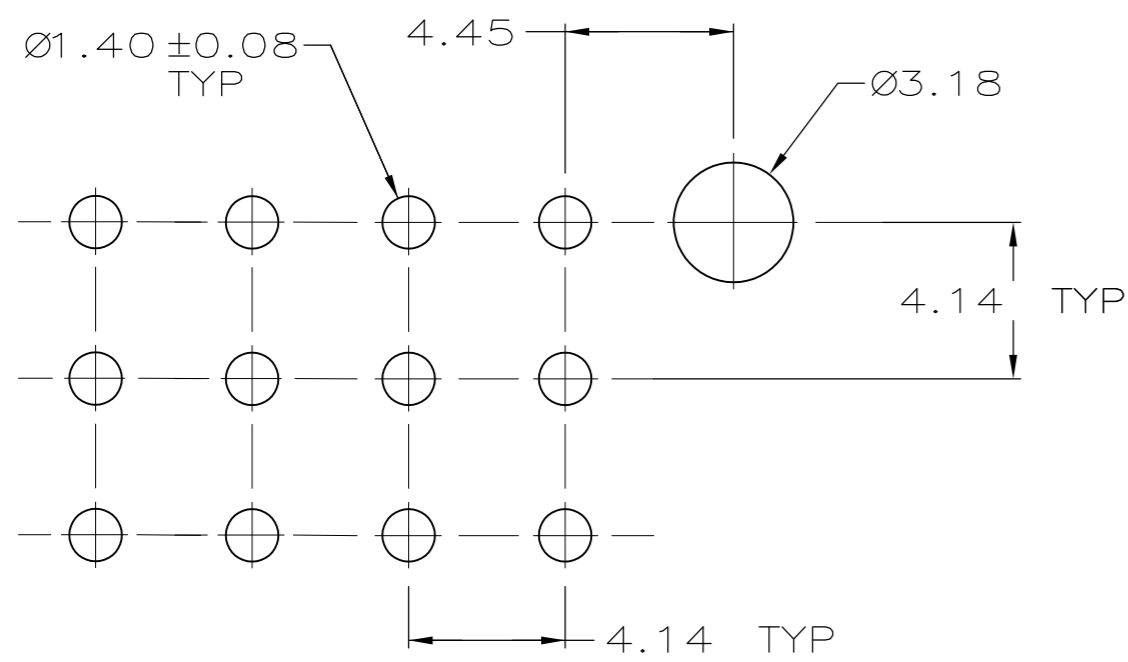


THIS DRAWING IS UNPUBLISHED. RELEASED FOR PUBLICATION
 © COPYRIGHT - By - ALL RIGHTS RESERVED.

LOC		DIST		REVISIONS			
P	LTR	DESCRIPTION		DATE	DWN	APVD	
CM	0	M		REVISED PER ECR-15-010337	23JUL2015	RK	SC



- PINS TO COMPLY WITH AMP SOLDERABILITY SPEC. 109-11-3.
- 0.00381 MIN MATTE TIN LEAD PLATE OVER 0.00127 MIN NICKEL.
- 0.00076 MIN GOLD PLATE IN THE LOCALIZED PLATE AREA, 0.00381 MATTE TIN LEAD IN THE LOCALIZED PLATE AREA, BOTH OVER 0.00127 MIN NICKEL.
- 0.00381 MIN MATTE TIN PLATE OVER 0.00127 MIN NICKEL.
- 0.00076 MIN GOLD PLATE IN THE LOCALIZED PLATE AREA, 0.00381 MATTE TIN IN THE LOCALIZED PLATE AREA, BOTH OVER 0.00127 MIN NICKEL.



RECOMMENDED LAYOUT FOR 1.57 THICK BOARD
 TOLERANCES NON-ACCUMULATIVE

BRASS, GOLD	5	NYLON, UL94V-0	WHITE	1-770186-1
BRASS, TIN	4	NYLON, UL94V-0	WHITE	1-770186-0
BRASS, GOLD	3	NYLON, UL94V-0	WHITE	770186-2
BRASS, TIN-LEAD	2	NYLON, UL94V-0	WHITE	770186-1
MATERIAL	FINISH	MATERIAL	COLOR	PART NO.

DIMENSIONS:		TOLERANCES UNLESS OTHERWISE SPECIFIED:		APVD		NAME	
mm		0 PLC	± -	08JUN05	S CARPENTER		
		1 PLC	± -	28JUL2003	R JONES		
		2 PLC	± 0.13	28JUL2003	R JONES		
		3 PLC	± -	PRODUCT SPEC	R JONES		
		4 PLC	± -	APPLICATION SPEC	R JONES		
		ANGLES	± -		TE Connectivity		
MATERIAL	FINISH	WEIGHT		SIZE	CAGE CODE	DRAWING NO	RESTRICTED TO
-	-	-	-	A2	00779	C=770186	-
CUSTOMER DRAWING				SCALE	SHEET	REV	
				5:1	1 of 1	M	